

RESOLUTION NO.

BOARD OF COUNTY COMMISSIONERS
COUNTY OF EL PASO, STATE OF COLORADO

RESOLUTION TO APPROVE APPLICATION FOR PRELIMINARY ACCEPTANCE OF CERTAIN STREETS WITHIN RETREAT AT TIMBERRIDGE FILING NO. 2 INTO THE EL PASO COUNTY ROAD MAINTENANCE SYSTEM.

WHEREAS, the Board of County Commissioners of El Paso County, Colorado, has received an application for preliminary acceptance of certain streets located within the unincorporated area of El Paso County, more particularly described herein, for addition and maintenance into the El Paso County Highway System; and

WHEREAS, the same have been inspected by El Paso County, and the investigations reveal the County should accept and maintain such streets;

NOW, THEREFORE, BE IT RESOLVED the Board of County Commissioners of El Paso County, Colorado, hereby approves the preliminary acceptance for maintenance of streets within the unincorporated area of El Paso County as described in Exhibit A, which is attached hereto and incorporated by reference, effective as of this date.

DONE THIS 6th day of FEBRUARY, 2024, at Colorado Springs, Colorado.

BOARD OF COUNTY COMMISSIONERS
OF EL PASO COUNTY, COLORADO

ATTEST:

By: _____
County Clerk & Recorder

By: _____
CHAIR



EL PASO COUNTY

COLORADO

APPLICATION FOR PRELIMINARY ACCEPTANCE INTO THE EL PASO COUNTY MAINTENANCE SYSTEM

SUBDIVISION	<u>RETREAT AT TIMBERRIDGE F2</u>	R - T - S	PLAT	<u>15015</u>
APPLICANT	<u>TIMBERRIDGE DEVELOPMENT GROUP LLC</u>	65-12-27	DATE PLAT RECORDED	<u>9/16/2022</u>
FILE REFERENCE	<u>SF-21-021</u>		BOCC HEARING	<u>2/06/2024</u>

NOTES

ROAD NO.	ROAD NAME	FROM	TO	LENGTH FT/MI	ROW WIDTH	SURFACE TYPE	SURF WDTH	F/F CG	CURB TYPE
4620	ELK ANTLER LN	CDS	ANTELOPE RAVINE DR	259'/0.05 mi	50'	3" HMA/8" CTS	30'	32'	C
4620	ELK ANTLER LN	START OF SUBD	OWL PERCH LP	171'/0.03 mi	50'	3" HMA/8" CTS	30'	33'	AC
4620	ELK ANTLER LN	OWL PERCH LP	END OF SUBD	242'/0.05 mi	50'	3" HMA/8" CTS	30'	34'	A
4627	ASPEN VALLEY RD	START OF SUBD	FALCON NEST CT	442'/0.08 mi	60'	3" HMA/8" CTS	28'		N/A
4627	ASPEN VALLEY RD	FALCON NEST CT	END OF SUBD	685'/0.13 mi	60'	3" HMA/8" CTS	28'		N/A
4631	BISON VALLEY TRL	START OF SUBD	OWL PERCH LP	190'/0.04 mi	50'	3" HMA/8" CTS	30'	34'	A
4631	BISON VALLEY TRL	OWL PERCH LP	RABBIT TAIL PL	622'/0.12 mi	50'	3" HMA/8" CTS	30'	32'	C
4776	FALCON NEST CT	CDS	ASPEN VALLEY RD	519'/0.1 mi	60'	3" HMA/8" CTS	28'		N/A
4776	FALCON NEST CT	ASPEN VALLEY RD	CDS	518'/0.1 mi	60'	3" HMA/8" CTS	28'		N/A
4791	OWL PERCH LP	BISON VALLEY TRL	ELK ANTLER LN	1763'/0.33 mi	50'	3" HMA/8" CTS	30'	32'	C
4791	OWL PERCH LP	ELK ANTLER LN	CDS	723'/0.14 mi	50'	3" HMA/8" CTS	30'	32'	C
TOTAL LENGTH ACCEPTED				6134'/1.16 mi					

EL PASO  **COUNTY**
COLORADO

APPLICATION FOR PRELIMINARY ACCEPTANCE INTO THE EL PASO COUNTY MAINTENANCE SYSTEM

SUBDIVISION RETREAT AT TIMBERRIDGE F2 R - T - S PLAT 15015
APPLICANT TIMBERRIDGE DEVELOPMENT GROUP LLC 65-12-27 DATE PLAT RECORDED 9/16/2022
FILE REFERENCE SF-21-021 BOCC HEARING 2/06/2024

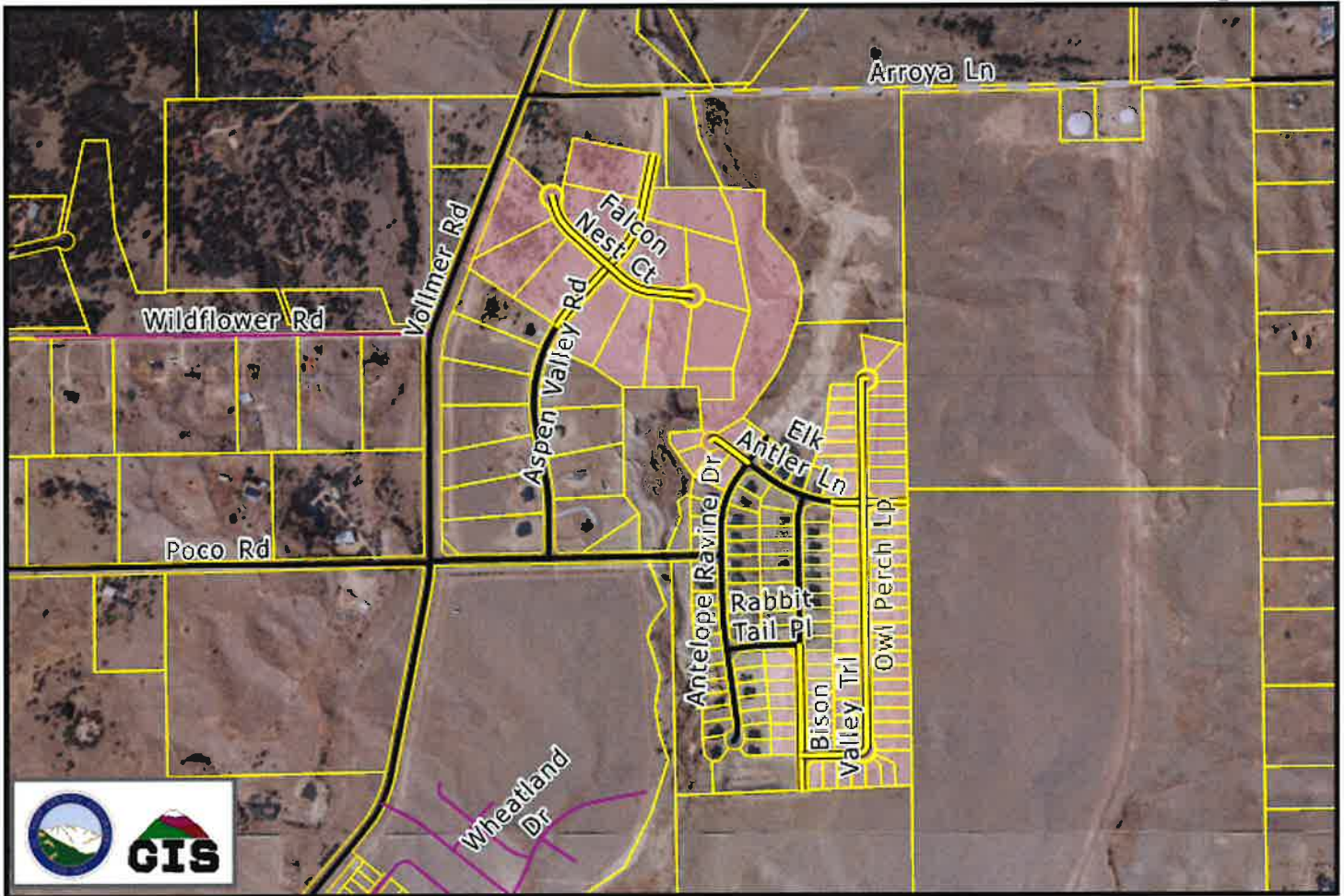
NOTES

APPROVALS

BK
BK ASSEST SYSTEMS SUPERVISOR
BW
BW INSPECTION SUPERVISOR
MH
MH PCD DIRECTOR

ACCEPTANCE RECOMMENDED

[Signature]
COUNTY ENGINEER
Kevin Mastin
Kevin Mastin (Nov 29, 2023 10:46 MST)
PUBLIC WORKS DIRECTOR



Aspen Valley Rd
 From Start of Subd
 (NE) Northeast
 To Falcon Nest Ct
 Approx. Length 0.08 mi

Elk Antler Ln
 From Cds
 (SE) Southeast
 To Antelope Ravine Dr
 Approx. Length 0.05 mi

Falcon Nest Ct
 From Aspen Valley Rd
 (SE) Southeast
 To Cds
 Approx. Length 0.1 mi

Aspen Valley Rd
 From Falcon Nest Ct
 (N) North
 To End of Subd
 Approx. Length 0.13 mi

Elk Antler Ln
 From Start of subd
 (E) East
 To Owl Perch Lp
 Approx. Length 0.03 mi

Roads Accepted for Maintenance

Maintained Roads

Not Accepted for Maintenance

Other Government Maintenance

Private Roads - Private Maint

Retreat at Timberridge F2

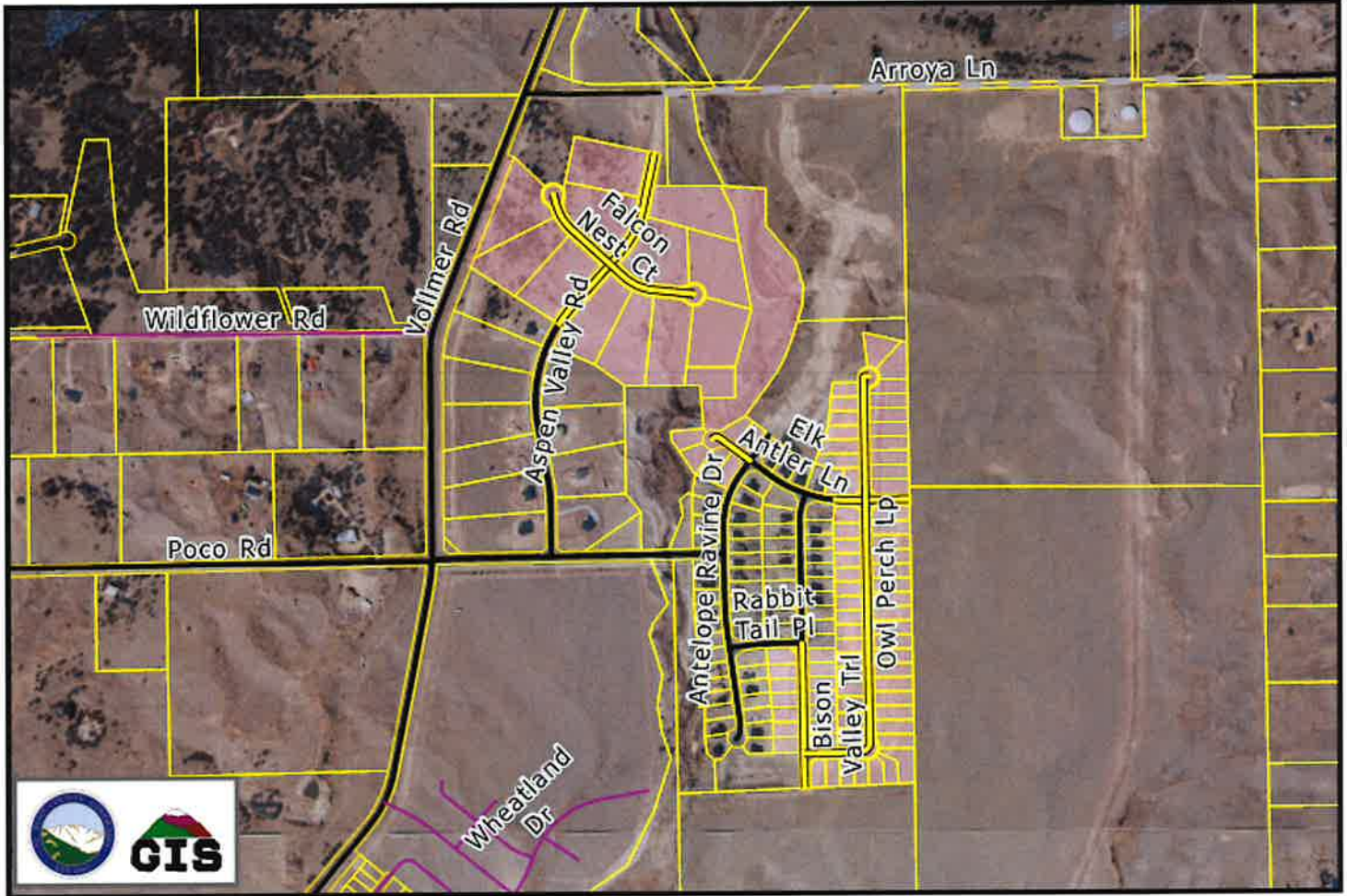
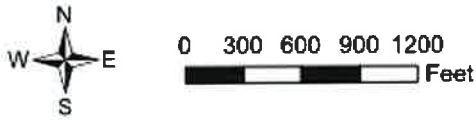
Parcels

Bison Valley Trl
 From Start of Subd
 (N) North
 To Owl Perch Lp
 Approx. Length 0.04 mi

Elk Antler Ln
 From Owl Perch Lp
 (E) East
 To End of Subd
 Approx. Length 0.05 mi







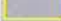
Bison Valley Trl
 From Owl Perch Lp
 (N) North
 To Rabbit Tail Pl
 Approx. Length 0.12 mi

Falcon Nest Ct
 From Cds
 (SE) Southeast
 To Aspen Valley Rd
 Approx. Length 0.1 mi



Owl Perch Lp
 From Bison Valley Trl
 (NE) Northeast
 To Elk Antler Ln
 Approx. Length 0.33 mi

Owl Perch Lp
 From Elk Antler Ln
 (N) North
 To Cds
 Approx. Length 0.14 mi

-  Roads Accepted for Maintenance
-  Maintained Roads
-  Not Accepted for Maintenance
-  Other Government Maintenance
-  Private Roads - Private Maint
-  Retreat at Timberridge F2
-  Parcels

Signature: Brad Walters
Brad Walters (Dec 14, 2023 14:20 MST)

Email: bradwalters@elpasoco.com

Signature: Brian Kay
Brian Kay (Dec 15, 2023 08:56 MST)

Email: briankay@elpasoco.com

Signature: Meggan Herington
Meggan Herington (Nov 29, 2023 13:48 MST)

Email: MegganHerington@elpasoco.com